

# Eclipse Streamsheets

Aggregate, monitor, and control real-time data.

Streamsheets enables non-technical and technical users to build **real-time data streaming applications** without using code (“**No-Code**”). You can use time-series data, apply functions to the data, and generate triggers using only cell formulas. Monitor real-time dashboards and send alerts via email or by SMS.

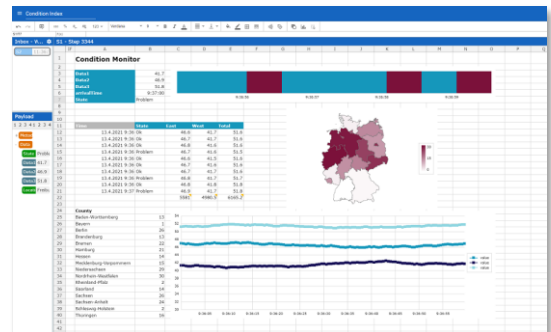
Typical applications include the visualization, analysis, simulation, and control of data streams. Via connectors and cell functions on a **spreadsheet surface** you can easily receive data from and provide data to other apps, IoT devices, and machines.

Streamsheets is open source, which means it is freely available for use. With the **Cedalo Enterprise Platform for Eclipse Streamsheets**, we offer premium support and plugins that work seamlessly with the open-source core.

**More Info & Download :** <https://cedalo.com/products/streamsheets/>

## Key Facts

- Product: **Eclipse Streamsheets**
- Version: **2.5**
- Category: **No-code development platform**
- Company: **Cedalo GmbH**



## Capabilities

- Real-time processes** Built for continuous data streams for timely action.
- No code** Suitable for non-technical users.
- Edge and cloud** Runs in the cloud, on your servers, or on edge devices like the Raspberry Pi.
- API connectivity** Streamsheets lets you connect to any web service with REST.
- IoT protocols** Protocols for connectivity like MQTT, HTTP, REST, and OPCUA.
- Fast dashboard** Visualize your data with a few clicks.
- Database access** Store data in databases like Timescale, MongoDB, or Influx.
- 24/7 online** Made for 24/7 operation.

## Use Cases



## Features

Features	Versions
Spreadsheet functions	Open source and premium
Diagrams	Open source and premium
<b>Protocols</b> - MQTT, Kafka, HTTP client, web hooks	Open source and premium
<b>Protocols</b> - OPC UA, file watcher, act as web server, act as REST server	Premium
Direct integration of 3 <sup>rd</sup> party calls in functions	Premium
API	Premium
<b>Database</b> - MongoDB	Open source and Premium
<b>Databases</b> - Timescale DB, Influx DB, SQL connector	Premium
User management	Open source and premium
Shareable links	Premium
Work spaces	Premium
Advanced user management and Open ID connect	Premium